

# TRAMIGO

## TRACKING & CONNECTIVITY

### COMPLETE SOLUTION

# TRAMIGO IQL VEHICLE TRACKER

### COST EFFECTIVE TRACKING USING 2G TO 4G NETWORKS



CAT M1

The perfect solution to track any vehicle using 2G to 4G networks. The 4G vehicle tracker works perfectly with different vehicles voltage from V8 to 32V vehicles makes the device suitable for motorcycles to heavy duty vehicles.

### KEY FEATURES



**COST EFFECTIVE SOLUTION**  
For basic tracking



**EASY INSTALLATION**



**MULTIPLE I/O INTERFACE**  
For monitoring and control



**GEOFENCING**  
To detect unauthorized vehicle use



**SETTING UP ALARMS**  
Such as power on alarm and tow alarm



**DRIVING BEHAVIOUR MONITORING AND INCIDENT NOTIFICATION**  
E.g. harsh braking and acceleration



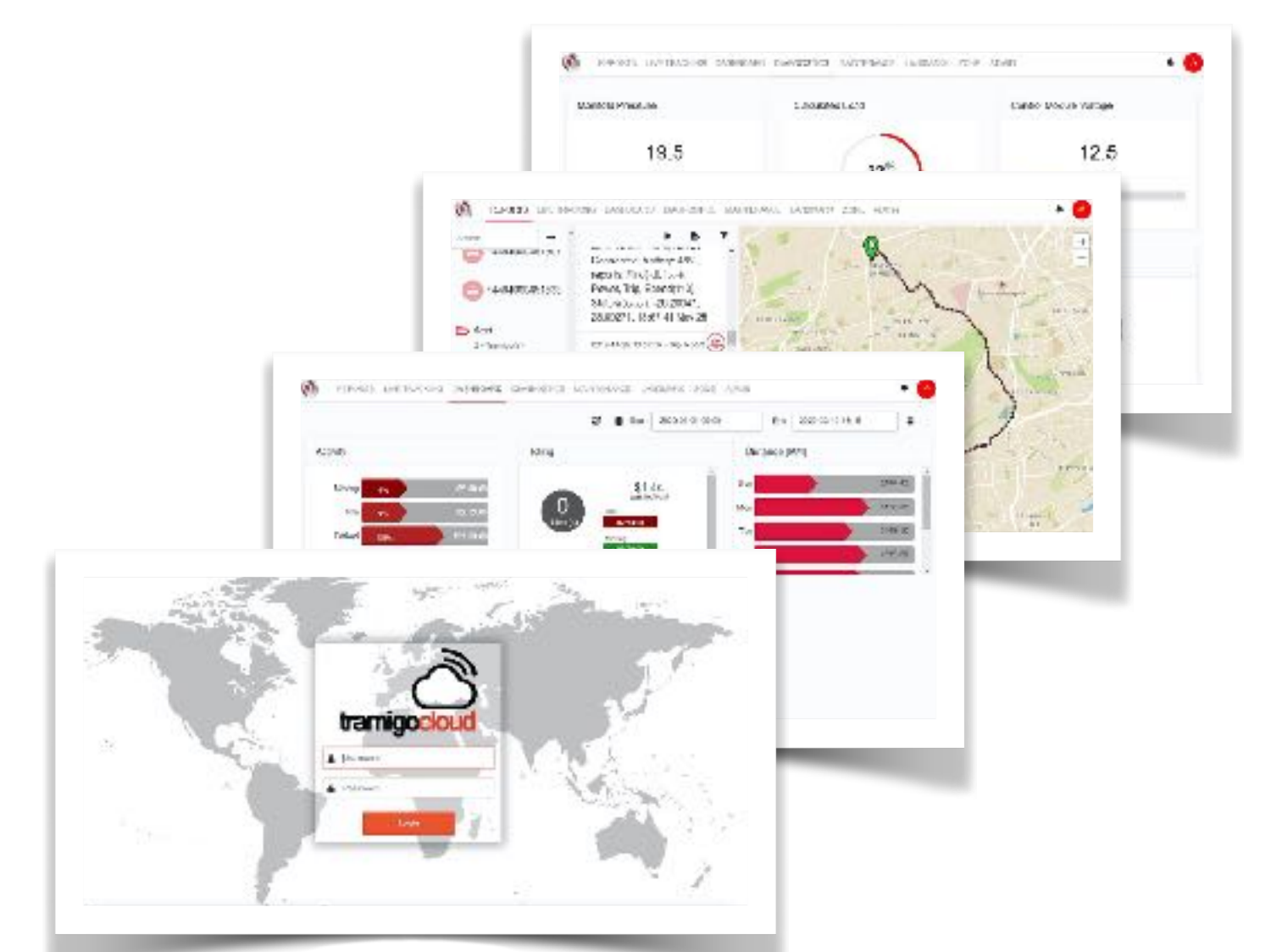
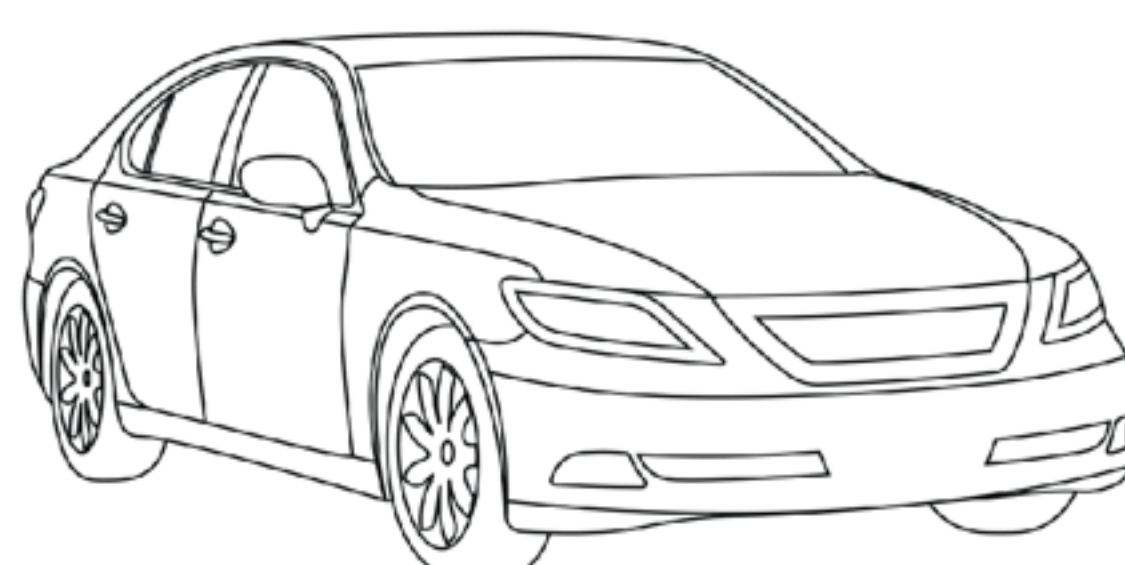
**INTERNAL 3-AXIS ACCELEROMETER**  
For motion detection



**PERIODIC & SPEED REPORTING**

### TRAMIGO IQL VEHICLE TRACKER eSIM EDITION

Tramigo IQL vehicle tracker eSIM edition uses 2G and 4G networks and comes with embedded SIM and affordable connectivity packages with free access to TramigoCloud and TramigoApp. TramigoCloud and TramigoApp allows you to track your vehicle remotely on your desktop or via mobile app.





### TRAMIGO IQL VEHICLE TRACKER

The small ultra thin device offers an affordable solution to detect and send out real-time alarms for motion sensing , Ignition sensing, over-speeding, idle engine, and smart fleet management to keep up vehicle maintenance schedules with Tramigo odometer.



**IDEAL FOR VEHICLE TRACKING AND SME FLEET MANAGEMENT**



### TECHNICAL SPECIFICATION

<b>Dimensions</b>	3.43"(L) × 2.17"(W) × 0.49"(H) (87× 55 × 12.5mm)
<b>Weight</b>	1.76oz (50g)
<b>Backup Battery</b>	Li-Polymer 190 mAh
<b>Operating Voltage</b>	8V to 32V DC
<b>Operating Temperature</b>	-30°C~ +80°C -40°C ~ +85°C for storage

### INTERFACES

<b>Digital Input</b>	1 positive trigger input for ignition detection
<b>Digital Output</b>	1 digital output, open drain, 150 mA max drive current
<b>Configurable Input/Output</b>	1 special I/O can be configured as a negative trigger digital input or an open drain output with 150 mA max drive current
<b>Serial Port</b>	1 TTL UART port for upgrading and debugging
<b>Cellular Antenna</b>	Internal only
<b>GNSS Antenna</b>	Internal only
<b>LED Indicators</b>	CEL, GNSS