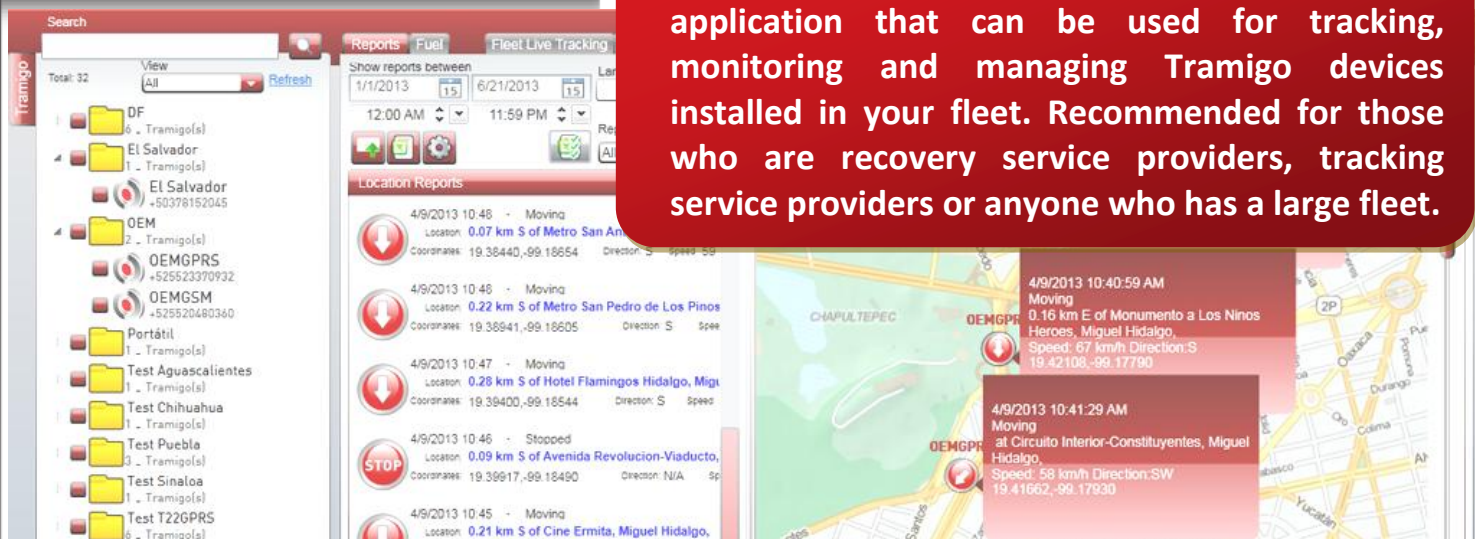


M1 Fleet Enterprise

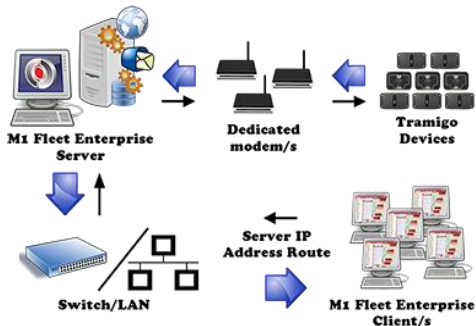
For more information. Email: support@tramigo.com

Tramigo M1 Fleet Enterprise is a client-server application that can be used for tracking, monitoring and managing Tramigo devices installed in your fleet. Recommended for those who are recovery service providers, tracking service providers or anyone who has a large fleet.



Client-server architecture

Supports multi-user, remote viewing of data, and other benefits of a client-server deployment.



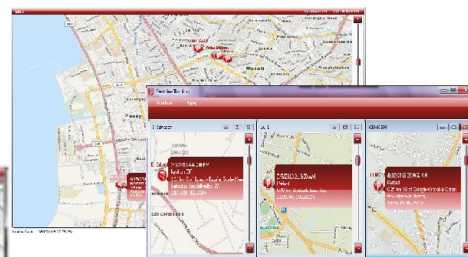
History playback and snail trail

View the whereabouts of your vehicle connected by line



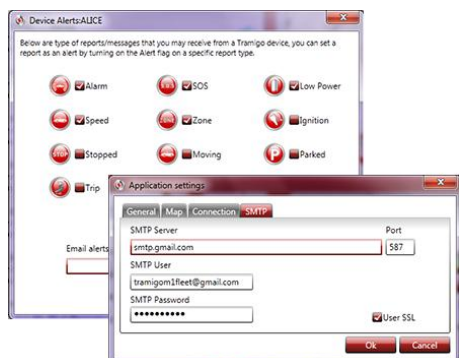
Live tracking

See your vehicle(s) move on map as it reports position including Tramigo Landmarks (TLD)



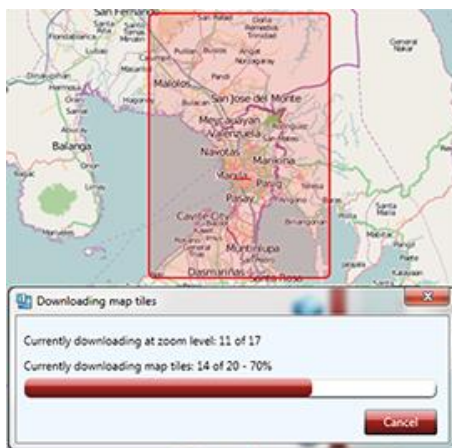
Alert Email Notification

Automatically receive an email when there's an alert received from your fleet.



Map downloading/ caching for offline

Download an area of map when connected to Internet, and use the offline map during offline.



Supports SMS and GPRS simultaneously

The system can process Tramigo device reports via SMS using a GSM modem and via GPRS through public static IP

Note: T22 supports SMS only.
T23 supports both GPRS and SMS.

Ability to create and export reports to an excel or CSV file

